



drywall manual

**plasterboard systems for
partitions, ceilings and
wall linings**

version **1.1.0**



For ease of download, the Siniat Drywall Manual has been split into separate volumes with their own page numbering.

Introduction section

This section includes updated information, added since it was published in December 2018.

Revision history

Version	Date of publication
1.0.0	December 2018
1.1.0	July 2022: Content update and rebranded

Please check that this is the current version by visiting the Siniat website. For archived versions please contact technical services.

drywall manual

plasterboard systems for partitions,
ceilings and wall linings

Version: **1.1.0**
Published: **July 2022**

introduction

siniat innovative drylining solutions	4
our service	5
invented by siniat	7
the external envelope	10

specification

partitions section

shaftwall section

linings section

floors and ceilings section

encasements section

reference

annexes

Etex Building Performance is the UK's leading provider of lightweight construction solutions.

Our combined expertise in drywall, passive fire protection and steel framing systems has created a range of unique solutions from the building envelope to internal linings, partitions and penetrations.

The Brands that make up Etex Building Performance are Siniat, Promat and FSi:



SINIAT
Dry construction materials specialist

Siniat manufactures drywall products to create systems for partitions, ceilings, wall linings and external sheathing. Our extensive range of plasterboards, metal profiles and related accessories provide opportunities for innovative specifications.

Our drylining solutions help the sector to cut wastage, improve manual handling, speed up installation times and address lifetime cost.

PROMAT
Passive fire protection specialists

Promat have a complete portfolio of boards, sprays, sealants and adhesives to protect structural steel, concrete structures, partitions, wall linings, floors, ceilings and roofs. Our wide range of products and systems provide proven and assured levels of fire protection across a wide range of applications and building sectors.

Our industry leading knowledge and expertise provides clients with fully integrated design solutions that deliver required levels of fire protection across both refurbishment and new build projects.

FSi
Fire stopping and cavity barrier specialists

FSi have vast experience and knowledge in both fire stopping and cavity barriers. As the industry has grown, so to has our resource and ability to offer accurate, swift technical support and solutions for the ever-changing requirements of the market.

Alongside our market leading technical support, FSi's ability to manufacture all products in the UK allow us the flexibility to support the industry's rapidly increasing product requirements and the need to develop and innovate for a sustainable future.

siniat innovative drylining solutions

Welcome to the latest edition of the Siniat Drywall Manual which supersedes all previous versions. It contains the technical information you need to specify the most appropriate drylining product or drylining system.

This document is intended as guidance for the correct use of Siniat GTEC products and systems in typical, best practice applications. The detailed technical information is to assist you in selecting and specifying the correct systems for your intended applications, but it does not cover all possible configurations of products in all possible constructions.

If your project requirements differ, please get in touch with us.

We make reference to products to supplied by other manufacturers; please seek their advice when using these products. In addition, please seek advice from fixing supplier and/or qualified professionals when you are fixing our products to various structures.

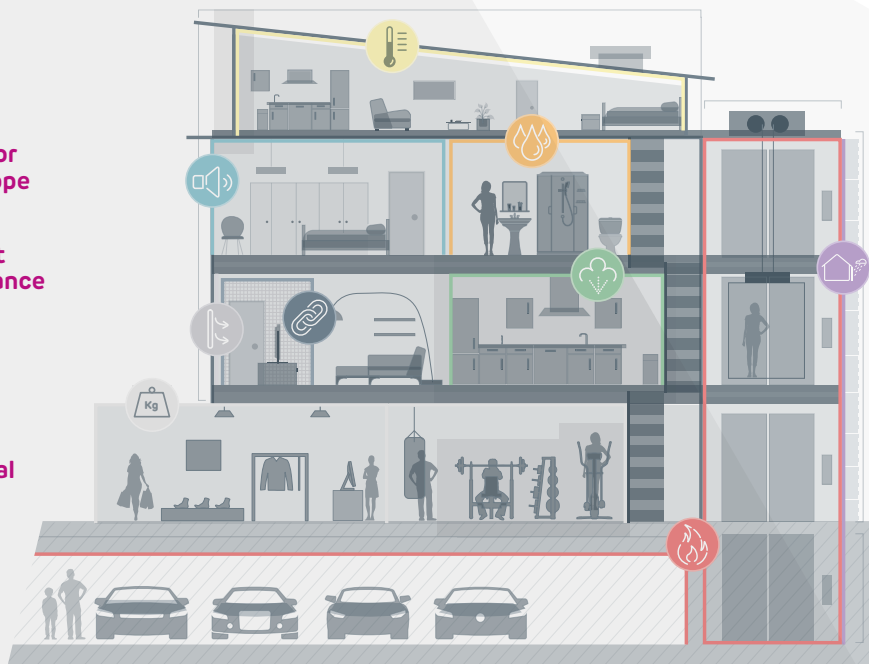
This document is non-exhaustive and provides general advice in line with good practice; further information should be sought when required. All reasonable efforts have been made to ensure its accuracy and future changes and improvements may be made without prejudice or notice.

The correct installation and specification of GTEC systems and components is the responsibility of the contractor and the specific.

All GTEC systems should be constructed in accordance with all relevant building regulations and the guidance in 'BS 8212:1995 Code of Practice for Drylining and Partitioning using Gypsum Plasterboard', 'BS 8000-8:1994 Workmanship on building sites – Code of practice for plasterboard partitions and dry linings' and 'BS EN 13964:2004+A1:2006 Suspended ceilings – requirements and test methods'. GTEC and Siniat are trademarks of Etex Building Performance Limited.

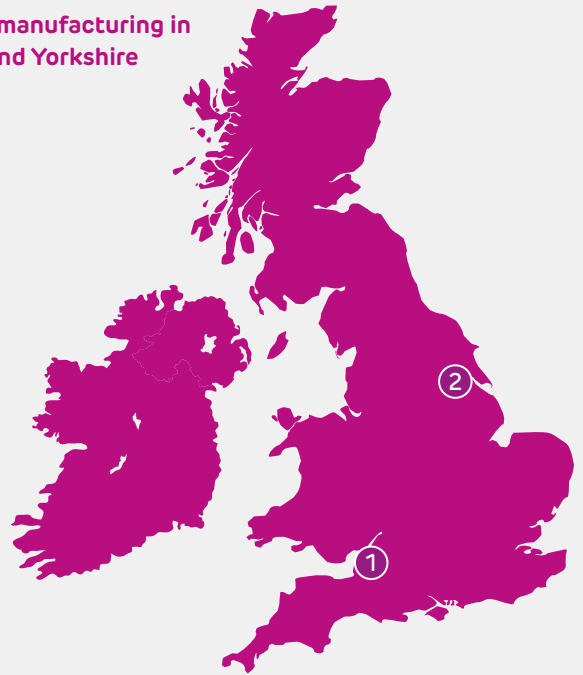
Contact technical services:
 01275 377 789
 technical.siniat@etexbp.co.uk

-  **acoustic**
-  **exterior envelope**
-  **fire resistance**
-  **impact resistance**
-  **moisture resistance**
-  **repels water**
-  **security**
-  **thermal**
-  **vapour**



our service

Proudly manufacturing in
Bristol and Yorkshire



Our products and solutions provide new opportunities for innovative specifications in schools, hospitals and other commercial projects. Through customer insights, we also help the sector to cut wastage, improve manual handling, speed up installation times and deliver projects which are sustainable and address lifetime cost.

A trusted supply chain partner

We offer an extensive product range to reflect a huge variety of projects and budgets, providing a guaranteed next day delivery for our customers. Many of the construction sector's most successful companies trust our products, customer service and technical knowledge to give their business a competitive edge.

Contact customer services:

T: 01275 377 773

E: orderline@etexbp.co.uk

Technical expertise

Our technical team are on hand to help with queries about any of our products and systems. For larger projects, we can provide the initial design support, followed by on-site technical support during the installation phase. For smaller projects, our website contains a wealth of information and practical videos, alongside telephone support Monday to Friday 9am-12.30pm / 2.00pm-5.00pm.

Contact Technical Services

T: 0800 145 6033 or 01275 377 789

E: technical.siniat@etexbp.co.uk

Project planning and support

For larger projects, we add value before, during and after the construction phase. Working with the project team, we can support the initial tender, finding ways to improve aesthetics or building performance, cut construction costs, reduce build times or suggest ways to lower on-going maintenance costs.

Contact our sales team on:

T: 01275 377 773



1

Bristol Facility: Capacity in excess of 50 million sqm of plasterboard per annum



2

Ferrybridge Facility: Capacity in excess of 25 million sqm of plasterboard per annum

Committed to sustainable construction

The majority of our products are manufactured here in the UK and are 99% recyclable.

They are also:

- ▶ BRE Green Guide A / A+ rated and help collect sustainability code credits.
- ▶ Certified and managed sustainability to Responsible Sourcing BES 6001, ISO 9001 and ISO 14001.

Our teams help designers and contractors achieve their sustainability targets for specific projects through efficient design detailing and the careful selection of appropriate products and systems.

Where needed, we can create bespoke lengths to reduce construction waste, and any post-consumer waste can be recycled via our Siniat Wasteline Direct service.

Lifetime System Warranty

Our products and components are rigorously tested together to ensure compatibility and system performance, enabling us to guarantee the technical performance of our systems. When systems are built entirely with Siniat components and materials – by qualified professionals and in accordance with our latest literature and relevant standards – we can offer our Lifetime System Warranty.

In the unlikely event of failure, provided the system is unaltered, as originally designed and built, we will reinstate the system to its originally specified performance level. This warranty gives the confidence that Siniat systems will perform as intended throughout the life of the building.

Warranties for products and systems in wet or severe humidity environments are available separately on request. For full details of the Lifetime System Warranty, please visit [siniat.co.uk](https://www.siniat.co.uk)



invented by siniat

From over 30 years of experience on building sites we know there is unmet potential in drywall and have created the boards to unlock it.

Excellent fire and acoustic performance is always expected and we have the range of boards with higher densities, highly developed additives and patented technology to achieve the top levels of fire and sound performance needed in the UK and Ireland.

But we don't consider that to be enough. Better finishing capabilities are available. As a result we are the first and only manufacturers of gypsum plasterboards which offer exceptional water resistance, exceptional strength and exceptional finishing speed.

We also know that one board can do more than one thing. Our boards combine the highest levels of performance making them suitable for a huge breadth of applications, reducing the amount of fixing, and potentially meaning only a single board type is needed on site.

our unique products

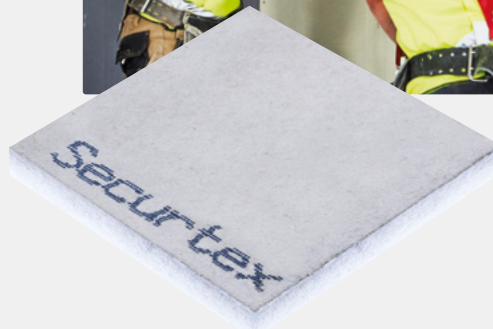
Securtex

Type D,E,F,H1, I and R to BS EN 520

A reinforced plasterboard for secure partition systems meeting requirements of Secured By Design and Part Q for residential and commercial buildings.

- Eliminates the need for plywood or metal mesh — making it easier and quicker to install.
- Embedded high tensile glass fibre mesh withstands intruder attack to protect building fabric, inhabitants and contents.
- Meets requirements of Secured by Design and Part Q of Building Regulations.

Suitable for [partitions systems](#) and [lining systems](#).





LaDura

Type D,E,F,H1, I and R
to BS EN 520

Exceptionally strong for extreme impact applications and maximum fixture pull-out resistance.

- Severe Duty performance from a single 12.5mm boarded partition.
- H1 moisture resistance for humid applications.
- Highest board surface mass for maximum levels of sound insulation.
- Fire, sound, impact and moisture performance allowing specification of just one board type per project.



See System Tables on [LaDura partition systems](#)
Suitable for [partitions systems](#) and [lining systems](#).

Aquaboard™

Type GM-F, GM-H1 and
GM-I to BS EN 15283

Highly water resistant gypsum board for wet areas.

- High sound and fire resistance.
- Ideal for wet and humid environments.
- Fully mould and fungus resistant.
- Dimensionally stable and easier to cut, fix and handle than cementitious boards.
- May be externally exposed for up to six months for innovative construction schedules.



See System Tables on [Aquaboard™ partition systems](#)
Suitable for [partitions systems](#), [lining systems](#),
[floors and ceilings](#) and external sheathing.

our unique products

Megadeco

Type D,F, I and R to BS EN 520

Pre-sealed, white faced board for ease of decoration and finishing.

- Unique pre-sealed, white, paper facing.
- Equivalent sound resistance to GTEC dB Board.
- Equivalent fire resistance to GTEC Fire Board.
- Substitute with GTEC Universal Board for skim plastering.
- Fire, sound and impact performance allowing specification of just one board type per project.

See System Tables on [Megadeco partition systems](#)

Suitable for [partitions systems](#), [lining systems](#) and [floors and ceilings](#).



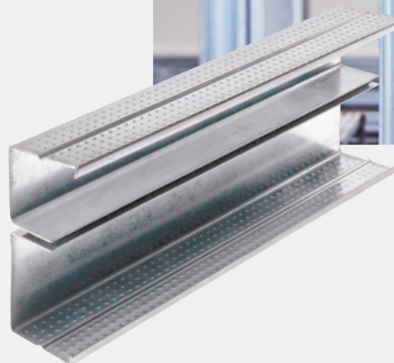
Resilient Acoustic Stud

GTEC Resilient Acoustic Stud (RAS) is an innovative acoustic stud aimed at helping achieve acoustic performances on site, whilst reducing risk, build time and partition footprint.

- Provides excellent acoustic performances when used with Siniat Performance boards
- Great workability, allowing for easy cutting on site and maintains its shape during installation (removing the chance of 'screw popping')
- Manufactured to BS EN 1419.

See relevant System Tables on [Megadeco partition systems](#), [GTEC Universal board partition systems](#) and [GTEC dB board partition systems](#)

Suitable for [partitions systems](#) and [lining systems](#).



the external envelope

Siniat is not just about internal works — Gypsum solutions are revolutionising the external envelope too. Siniat has developed Weather Defence — An external sheathing board which has transformed building envelope performance and construction. Weather Defence is made from gypsum and has a patented hydrophobic core and water resistant liner and is a replacement for cement particle boards.

It is being used on hundreds of projects throughout the UK because its benefits have proved too many for designers and installers to ignore.

It has been specified by 45% of AJ100 British Architects.



Quick Installation

With no need for specialist cutting tools



A1 Non-Combustible

For fire protection



Withstands 12 months exposure on site

Resistant to water, weather and mould



Double BBA Certificate

For peace of mind



For a detailed guide to Weather Defence, including system performances and installation guide, please refer to our Weather Defence brochure, available from:

W: siniat.co.uk/weatherdefence
E: literatureline@siniat.co.uk
T: 01275 377 582

Technical services

Technical advice and project enquiries.

☎ 0800 145 6033 or 01275 377 789

@ technical.siniat@etexbp.co.uk

GB orderline

For placing orders, delivery enquiries
and local stockists etc.

☎ 0800 373 636

@ orderline@etexbp.co.uk

Ireland orderline

For placing orders, delivery enquiries
and local stockists etc.

☎ +353 (0)162 03114

@ irelandorders@etexbp.com

Literatureline

For Siniat literature.

@ literatureline@etexbp.co.uk

Wasteline direct

Plasterboard waste management enquiries.

☎ 01275 377 579

@ wasteline@etexbp.co.uk

Etex Building Performance Limited

Marsh Lane, Easton-in-Gordano,
Bristol, BS20 0NE

☎ +44 (0)1275 377 773

@ siniat.co.uk



CI/SfB | | Rf7 | |